



## Behavior Problems? What to do?



**Secret Lake  
DOG TRAINING** LLC  
CLASSES FOR PUPPIES & DOGS  
*"Dog training is not a secret."*

Does your dog growl over his food bowl or treats? Does your dog refuse to get off the furniture? Does your dog demand your attention? Is your dog afraid of people? Does your dog growl or snap? The behavior will not get better by itself. You need to take steps now to work with a professional trainer or behaviorist to learn how to change these negative behaviors and manage your dog.

**Dogs can be funny, smart, sweet, and a joy to live with.**

**Dogs can also be pushy, dominant, fearful, aggressive and downright dangerous.** Any dog can bite under the right circumstances. Any dog can take over a household if there is no clear leader. Any dog can become anxious and stressed. Any dog can develop behavior problems.

Owning a dog is a lifetime commitment that requires the ultimate patience, commitment, and leadership abilities. Unfortunately, not everyone knows about dog behavior, leadership, how problems develop, how to recognize warning signs and when to seek professional help.

**Behavior problems do not go away with time.** Instead, behavior problems usually worsen with time. A dog who growls on the bed can

escalate to biting very quickly. A fearful dog may bite if pushed beyond her comfort zone.

Sadly too many people think the best thing to do is to "leave the dog alone" when he is: eating, on the bed, has a bone, growls or snaps. Or they inadvertently praise fear and aggressive behaviors thus making the dog worse.

**Letting negative behaviors slide could take you down a very long dark road that ends with your dog being euthanized due to behavior problems.**

***If you have a dog that exhibits growling, snapping, biting, and/or fearful behaviors, you need help. Please call a trainer or behaviorist NOW.***

***To find someone near you, go to [www.apdt.com](http://www.apdt.com)***

Farms Village Plaza  
244 Farms Village Rd  
West Simsbury, CT

Phone: 860 404-0038  
[secretlakedog@comcast.net](mailto:secretlakedog@comcast.net)  
[www.secretlakedogtraining.com](http://www.secretlakedogtraining.com)

### Warning Signs

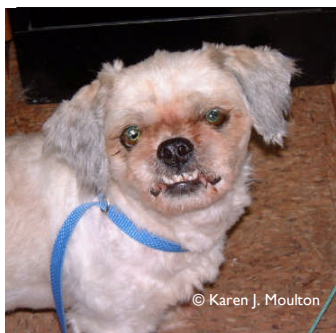
- Growling
- Snapping,
- Biting
- Guarding
- Fearful behavior such as cowering.

### What Not to Do

- Do not punish the dog. Punishment will not solve the underlying problems.
- Do not ignore the behavior and hope it goes away. Hope is not a plan; you need a plan.
- Inadvertently praise the dog by petting him and/or cooing at him when he is exhibiting the behavior.

### What to Do

- Seek professional help.
- Until you meet with a trainer or behaviorist, avoid putting the dog into the situations that elicit the aggressive displays. The key is not to let the dog continue to practice the behaviors.



© Karen J. Moulton



© Karen J. Moulton 2004



© Karen J. Moulton 2004